

NOTES:

1. TERMINAL FOR USE WITH 5557 SERIES HOUSINGS.
2. MATES WITH 5558, 5566 AND 5569 SERIES CONNECTORS.
3. REFER TO DWG. NO. CS-5556*/5558* FOR CRIMP SPECIFICATIONS.
4. PRODUCT SPECIFICATION AND PROCESSING PARAMETERS: SEE PSX-44485-0001.

MATERIAL:

1. CDA 510 PHOS. BRONZE .0080±.0004/(0.203±0.010) THICK.

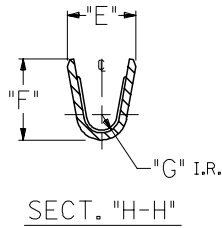
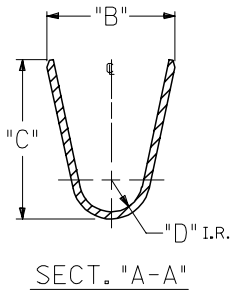
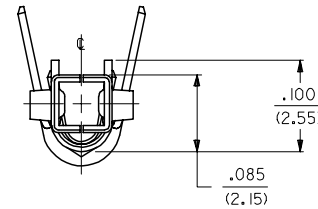
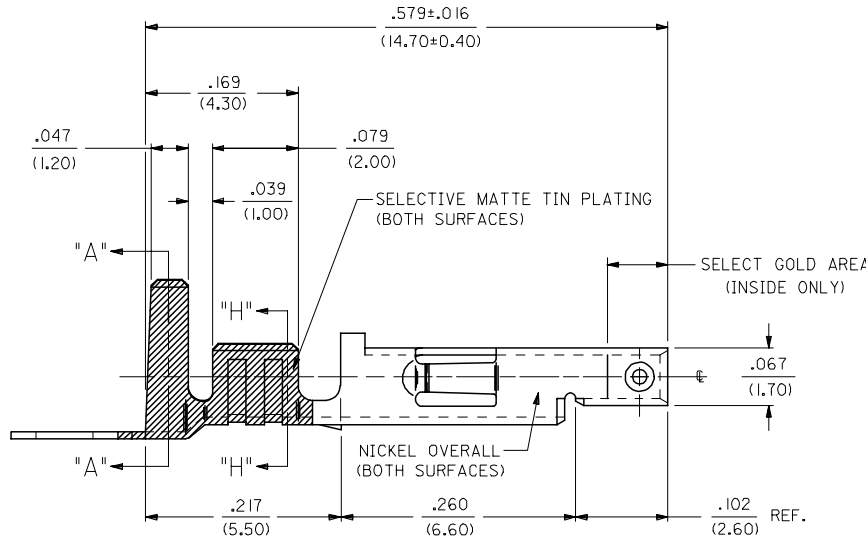
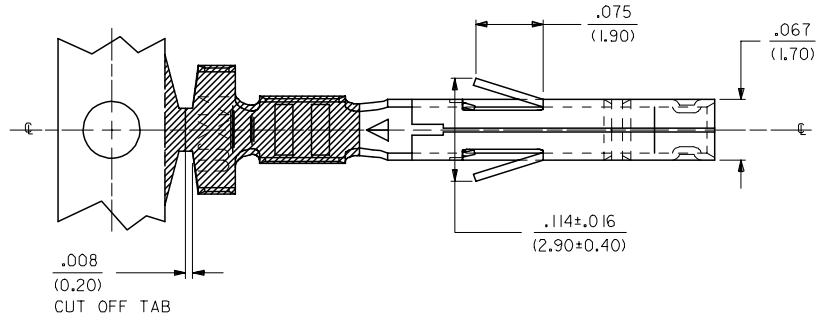
PLATING: PER SDES-88-***

*2 = SELECTIVE GOLD PLATE .000030/(0.00076) MIN., AND SELECTIVE MATTE TIN .000100/(0.00254) OVER .000050/(0.00127) MIN. NICKEL OVERALL.

*3 = SELECTIVE GOLD PLATE .000015/(0.00038) MIN., AND SELECTIVE MATTE TIN .000080/(0.00203) OVER .000050/(0.00127) MIN. NICKEL OVERALL.

*4 = SELECTIVE GOLD PLATE .000050/(0.00127) MIN., AND SELECTIVE MATTE TIN .000100/(0.00254) OVER .000050/(0.00127) MIN. NICKEL OVERALL.

*THE PRIMARY SHIPPING CARTON WILL BE LABELED "COMPLIANT TO RoHS DIRECTIVE 2002/95/EC AND ELV ANNEX II OF DIRECTIVE 2000/53/EC." CARTONS WITHOUT THIS LABEL MAY CONTAIN PRODUCT WITH TIN-LEAD PLATING.



| | |
|---|-----------------|
| REVISE NOTE 4 FC NO: UCP2006-1927 DRAWN: ADRIANOL 2006/02/17 CHKD: GPOLGAR 2006/02/17 APPR: ICOMERCJ 2006/02/17 | DESCRIPTION |
| | QUALITY SYMBOLS |
| | DESCRIPTION |
| | REV |

| | |
|-----------------|---------------------------------------|
| QUALITY SYMBOLS | GENERAL TOLERANCES (UNLESS SPECIFIED) |
| ▽=0 | mm INCH |
| ▽=0 | 4 PLACES ± --- ± --- |
| | 3 PLACES ± --- ± .010 |
| | 2 PLACES ± 0.25 ± .014 |
| | 1 PLACE ± 0.36 ± --- |
| | ANGULAR ±1/2° |

| | |
|--|-----------------------|
| GENERAL TOLERANCES (UNLESS SPECIFIED) | DIMENSION STYLE IN/MM |
| 4 PLACES ± --- ± --- | DRAWN BY DATE |
| 3 PLACES ± --- ± .010 | GEP 08/08/94 |
| 2 PLACES ± 0.25 ± .014 | CHECKED BY DATE |
| 1 PLACE ± 0.36 ± --- | RJF 08/08/94 |
| ANGULAR ±1/2° | APPROVED BY DATE |
| | RJF 08/08/94 |
| DRAFT WHERE APPLICABLE MUST REMAIN WITHIN DIMENSIONS | MATERIAL NO. |
| | SEE CHART |

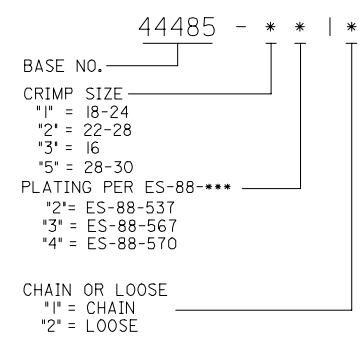
| | |
|-----------------------|------------------------|
| DIMENSION STYLE IN/MM | SCALE 10:1 |
| DRAWN BY DATE | DESIGN UNITS METRIC |
| GEP 08/08/94 | THIRD ANGLE PROJECTION |
| CHECKED BY DATE | |
| RJF 08/08/94 | |
| APPROVED BY DATE | |
| RJF 08/08/94 | |
| MATERIAL NO. | DOCUMENT NO. |
| SEE CHART | SD-44485-**** |

| | | |
|---|---------------------|------------------------|
| SCALE 10:1 | DESIGN UNITS METRIC | THIRD ANGLE PROJECTION |
| HIGH CYCL'G TERM FEM CRIMP, MINI-FIT JR. BLANK-PLATE-FORM | | |
| molex MOLEX INCORPORATED | | |
| MATERIAL NO. | DOCUMENT NO. | SHEET NO. |
| SEE CHART | SD-44485-**** | 1 OF 2 |
| THIS DRAWING CONTAINS INFORMATION THAT IS PROPRIETARY TO MOLEX INCORPORATED AND SHOULD NOT BE USED WITHOUT WRITTEN PERMISSION | | |

| | |
|-----------|----|
| 2 | C1 |
| 1 | C2 |
| SHT. REV. | |

| ITEM NO. | WIRE GAGE | QUANTITY PER REEL | DIM. "B" | DIM. "C" | DIM. "D" | DIM. "E" | DIM. "F" | DIM. "G" |
|------------|-----------|-------------------|-------------|-------------|----------|-------------|-------------|----------|
| 44485-1211 | 18-24 GA. | 4,000 | .142±.012 | .177±.016 | .035 | .075±.012 | .091±.016 | .020 |
| 44485-1212 | | | (3.60±0.30) | (4.50±0.40) | (0.90) | (1.90±0.30) | (2.30±0.40) | (0.50) |
| 44485-2211 | 22-28 GA. | 6,000 | .091±.012 | .091±.016 | .024 | .071±.012 | .065±.016 | .016 |
| 44485-2212 | | | (2.30±0.30) | (2.30±0.40) | (0.60) | (1.80±0.30) | (1.65±0.40) | (0.40) |
| 44485-3211 | 16 GA. | 4,000 | .142±.012 | .177±.016 | .035 | .091±.012 | .106±.016 | .024 |
| 44485-3212 | | | (3.60±0.30) | (4.50±0.40) | (0.90) | (2.30±0.30) | (2.70±0.40) | (0.60) |
| 44485-5211 | 28-30 GA. | 6,000 | .091±.012 | .091±.016 | .024 | .050±.010 | .044±.010 | .010 |
| 44485-5212 | | | (2.30±0.30) | (2.30±0.40) | (.60) | (1.27±0.25) | (1.12±0.25) | (0.25) |
| 44485-1311 | 18-24 GA. | 4,000 | .142±.012 | .177±.016 | .035 | .075±.012 | .091±.016 | .020 |
| 44485-1312 | | | (3.60±0.30) | (4.50±0.40) | (0.90) | (1.90±0.30) | (2.30±0.40) | (0.50) |
| 44485-2311 | 22-28 GA. | 6,000 | .091±.012 | .091±.016 | .024 | .071±.012 | .065±.016 | .016 |
| 44485-2312 | | | (2.30±0.30) | (2.30±0.40) | (0.60) | (1.80±0.30) | (1.65±0.40) | (0.40) |
| 44485-3311 | 16 GA. | 4,000 | .142±.012 | .177±.016 | .035 | .091±.012 | .106±.016 | .024 |
| 44485-3312 | | | (3.60±0.30) | (4.50±0.40) | (0.90) | (2.30±0.30) | (2.70±0.40) | (0.60) |
| 44485-5311 | 28-30 GA. | 6,000 | .091±.012 | .091±.016 | .024 | .050±.010 | .044±.010 | .010 |
| 44485-5312 | | | (2.30±0.30) | (2.30±0.40) | (.60) | (1.27±0.25) | (1.12±0.25) | (0.25) |
| 44485-1411 | 18-24 GA. | 4,000 | .142±.012 | .177±.016 | .035 | .075±.012 | .091±.016 | .020 |
| 44485-1412 | | | (3.60±0.30) | (4.50±0.40) | (0.90) | (1.90±0.30) | (2.30±0.40) | (0.50) |
| 44485-2411 | 22-28 GA. | 6,000 | .091±.012 | .091±.016 | .024 | .071±.012 | .065±.016 | .016 |
| 44485-2412 | | | (2.30±0.30) | (2.30±0.40) | (0.60) | (1.80±0.30) | (1.65±0.40) | (0.40) |
| 44485-3411 | 16 GA. | 4,000 | .142±.012 | .177±.016 | .035 | .091±.012 | .106±.016 | .024 |
| 44485-3412 | | | (3.60±0.30) | (4.50±0.40) | (0.90) | (2.30±0.30) | (2.70±0.40) | (0.60) |
| 44485-5411 | 28-30 GA. | 6,000 | .091±.012 | .091±.016 | .024 | .050±.010 | .044±.010 | .010 |
| 44485-5412 | | | (2.30±0.30) | (2.30±0.40) | (.60) | (1.27±0.25) | (1.12±0.25) | (0.25) |

LEGEND:



| SEE SHEET ONE EC NO: UCP2005-2253 DRWNS: STEWART 2005/04/22 CHKD: GOLFAR 2005/05/04 APPR: YMARGULLI 2005/05/04 REV: C1 | QUALITY SYMBOLS | GENERAL TOLERANCES (UNLESS SPECIFIED) <table border="1"> <tr> <th></th> <th>mm</th> <th>INCH</th> </tr> <tr> <td>4 PLACES</td> <td>± .005</td> <td>± .0004</td> </tr> <tr> <td>3 PLACES</td> <td>± .004</td> <td>± .0003</td> </tr> <tr> <td>2 PLACES</td> <td>± .003</td> <td>± .0002</td> </tr> <tr> <td>1 PLACE</td> <td>± .002</td> <td>± .0001</td> </tr> </table> | | | mm | INCH | 4 PLACES | ± .005 | ± .0004 | 3 PLACES | ± .004 | ± .0003 | 2 PLACES | ± .003 | ± .0002 | 1 PLACE | ± .002 | ± .0001 | DIMENSION STYLE IN/MM | SCALE 10:1 | DESIGN UNITS INCH | THIRD ANGLE PROJECTION |
|--|---------------------|--|------------------|--|-------------------------------|---------------------|---|--------|---------|----------|--------|---------|----------|--------|---------|---------|--------|---------|--------------------------|---------------|----------------------|------------------------|
| | | mm | INCH | | | | | | | | | | | | | | | | | | | |
| | 4 PLACES | ± .005 | ± .0004 | | | | | | | | | | | | | | | | | | | |
| | 3 PLACES | ± .004 | ± .0003 | | | | | | | | | | | | | | | | | | | |
| 2 PLACES | ± .003 | ± .0002 | | | | | | | | | | | | | | | | | | | | |
| 1 PLACE | ± .002 | ± .0001 | | | | | | | | | | | | | | | | | | | | |
| | | DRAWN BY GEP 08/08/94 | DATE 08/08/94 | TITLE HIGH CYCL'G TERM FEM CRIMP, MINI-FIT JR. BLANK-PLATE-FORM | | | | | | | | | | | | | | | | | | |
| | | CHECKED BY RJF 08/08/94 | DATE 08/08/94 | MOLEX INCORPORATED | | | | | | | | | | | | | | | | | | |
| | | APPROVED BY RJF 08/08/94 | DATE 08/08/94 | MATERIAL NO. SEE CHART | DOCUMENT NO. SD-44485-**** | SHEET NO. 2 OF 2 | | | | | | | | | | | | | | | | |
| DRAFT WHERE APPLICABLE MUST REMAIN WITHIN DIMENSIONS | | | | | | | THIS DRAWING CONTAINS INFORMATION THAT IS PROPRIETARY TO MOLEX INCORPORATED AND SHOULD NOT BE USED WITHOUT WRITTEN PERMISSION | | | | | | | | | | | | | | | |